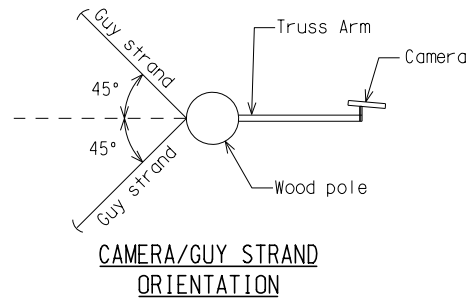
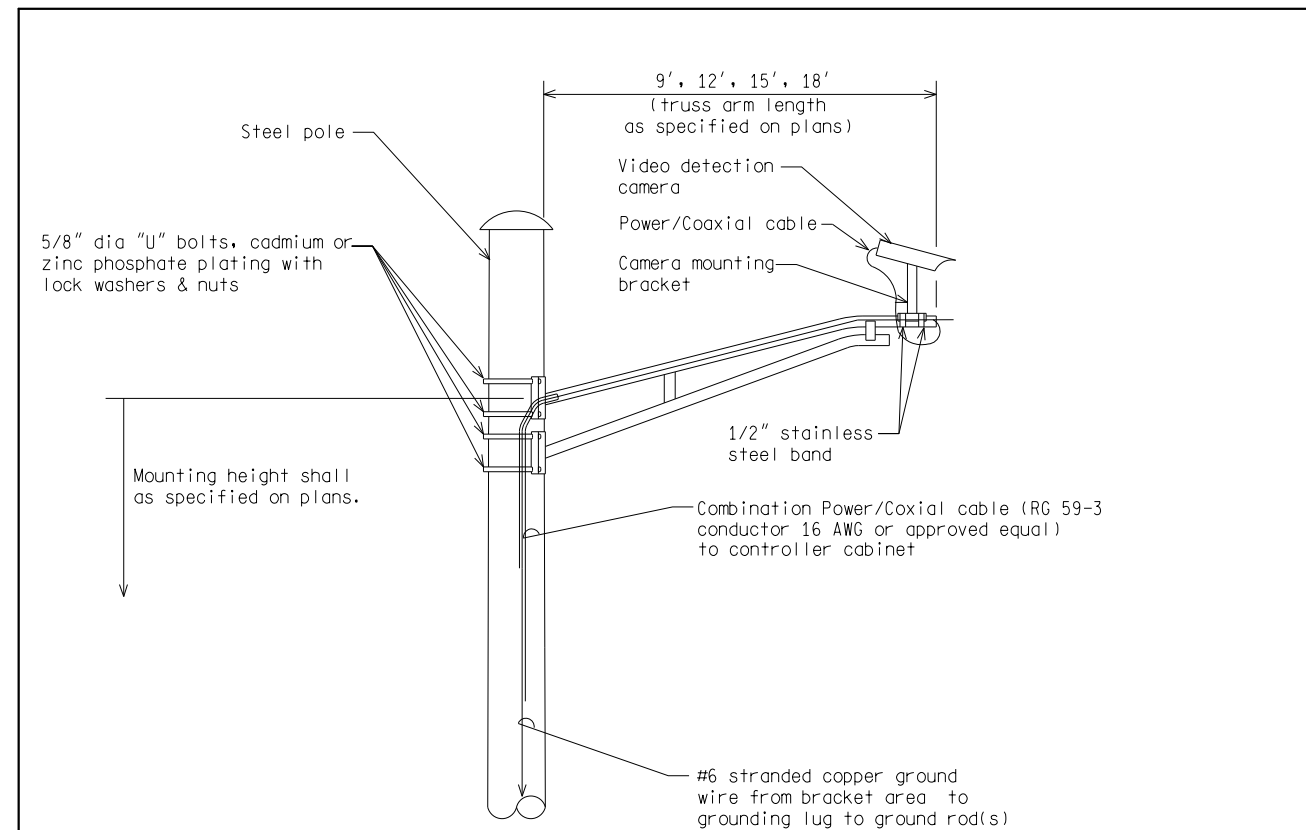


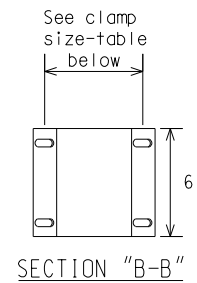
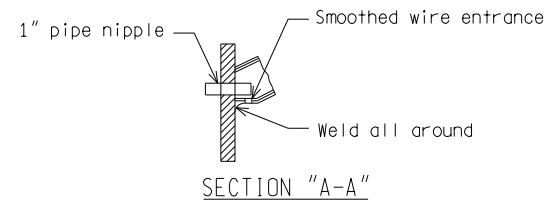
(\* NOTE:  
Use 2 guy strands at 90° orientation.



BRACKET TRUSS ARM MOUNTED CAMERA (WOOD POLE)



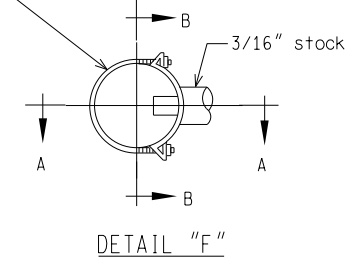
BRACKET TRUSS ARM MOUNTED CAMERA (STEEL POLE)



CLAMP SIZE TABLE

TYPE	POLE DIAMETER
A	3.6" - 4.5"
B	6.1" - 6.9"

(2) 5/8" dia. "U" bolts, cadmium or zinc phosphate plating with lockwashers & nuts.



NOT TO SCALE

MICHIGAN DEPARTMENT OF TRANSPORTATION BUREAU OF HIGHWAYS DELIVERY STANDARD PLAN	(SPECIAL DETAIL) FHWA APPROVAL DATE	PLAN DATE	SIG-430-A	SHEET 2 of 2
--	--	-----------	-----------	-----------------

NOT TO SCALE

File: RefDoc/TR/Signals/Web/Sp Det/Fin/SIG430A.dgn Rev. 02/16/17

<p>PREPARED BY TRAFFIC AND SAFETY</p> <p>DRAWN BY: DJF</p> <p>CHECKED BY:</p>	ENGINEER OF DELIVERY	MICHIGAN DEPARTMENT OF TRANSPORTATION BUREAU OF HIGHWAYS DELIVERY STANDARD PLAN FOR	
	ENGINEER OF DEVELOPMENT	VIDEO DETECTION CAMERA	
(SPECIAL DETAIL) FHWA APPROVAL DATE	PLAN DATE	SIG-430-A	SHEET 1 of 2

AS-LET PLAN REVISIONS

NO.	DATE	AUTH	DESCRIPTION	NO.	DATE	AUTH	DESCRIPTION



DATE:	CS:	DRAWING	SHEET
DESIGN UNIT:	JN:		
TSC:			